

Democracy Suite[®] EMS ImageCast[®] Voter Activation User Guide

Version: 5.11-CO::6

May 28, 2019

Table of Contents

Chapter 1: ICVA Introduction	1
1.1 Document Use	1
1.2 Relevant Disclaimers	1
1.3 Overview	1
Chapter 2: ICVA Installation	2
2.1 ICVA - Installing Prerequisites	2
2.1.1 Smart Card Helper Service Installation	2
2.2 ImageCast Voter Activation Application Installation	5
Chapter 3: ICVA Configuration	10
3.1 Running the Application for the First Time	10
3.2 Voting Modes	14
Chapter 4: Activating and Reading Voter Cards	16
4.1 Reviewing and Canceling a Voter Session	20
4.2 Error Codes	22
Chapter 5: View Session Report	24
Revision History	26
List of Figures	27

CHAPTER 1: ICVA INTRODUCTION

1.1 Document Use

This document is intended for use with the Democracy Suite® 5.11 platform.

1.2 Relevant Disclaimers

This document may make reference to certain Democracy Suite® functionalities that are not part of the current 5.11-CO campaign and should be disregarded throughout the document.

For a full list of relevant disclaimers, please see the “Relevant Disclaimers” section in the *2.02 - Democracy Suite® System Overview* Document.

1.3 Overview

The ImageCast Voter Activation (ICVA) application is a polling location tool which allows the poll workers to program smart cards for voters. The smart cards are be used to activate voting sessions on the following devices:

- ImageCast Evolution (ICE)
- ImageCast X (ICX)

The ICVA application depends on the following prerequisites being installed on the same computer:

- The driver for the qualified Smart Card reader
- The DVS Smart Card Helper Service

When the ICVA application first runs, it reads in a list of activation codes for the election, by polling location. Once the initial configuration is performed and the polling location is identified by the poll worker, the application will be waiting idly for smart cards to programmed and/or read.

The application can program new or overwrite used smart cards, with activation codes chosen by the poll worker.

CHAPTER 2: ICVA INSTALLATION

This chapter describes the installation process for the ICVA application. To install the ImageCast® Voter Activation application and the necessary components, follow the steps outlined in the sections. This section assumes that the ICVA application and relevant prerequisites will be installed to run on polling location machines running one of the following versions of the Microsoft Windows Operating System for clients:

- Windows 10

2.1 ICVA - Installing Prerequisites

2.1.1 Smart Card Helper Service Installation

1. To install the Smart Card Helper Service, insert the EMS Installation DVD, click on the **Install** tab, expand the **EMS Client Applications** item, and expand **Smart Card Helper Service**.
2. Double-click **64bit version**.
3. The User Account Control (UAC) screen may appear, depending on your security settings.
4. Click **Yes** to proceed.
5. Smart Card Helper Service Setup Wizard screen appears (see Figure 2-1).
6. Click **Next** to begin installation.



Figure 2-1: Setup Wizard Welcome screen

7. The License Agreement screen appears (see Figure 2-2). Read the license agreement.

8. If you understand and agree to all the terms contained within the License Agreement, select the **I Agree** option and click **Next**.

NOTE: You cannot proceed with the installation if you do not agree to the terms and conditions outlined in the License Agreement.

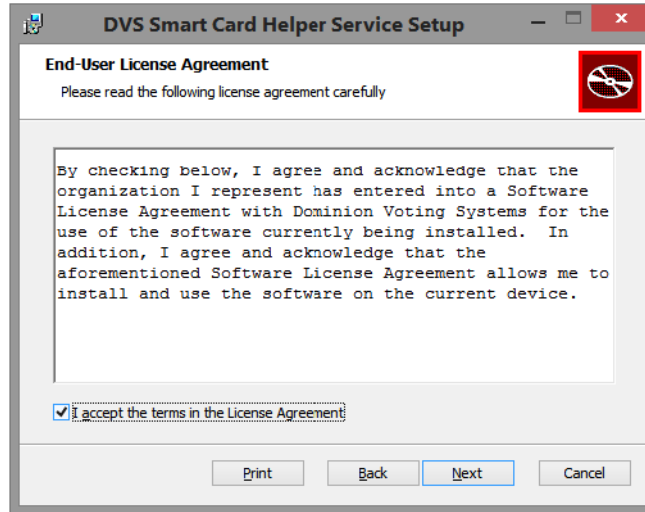


Figure 2-2: License Agreement Screen

9. Select Destination Folder screen appears. Keep the default file path listed in the Folder field. This is the location to which Smart Card Helper Service will be installed. See see Figure 2-3.
10. Click **Next** to continue.

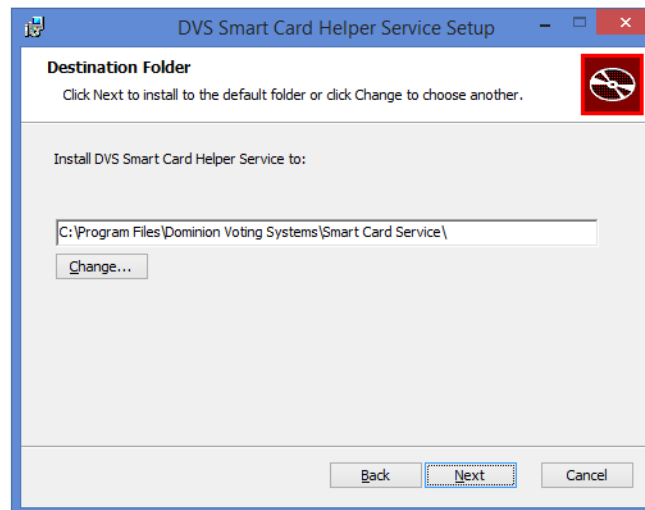


Figure 2-3: Destination Folder Screen

11. Click **Install** to start the installation. See see Figure 2-4..

The Smart Card Helper Service will begin to install. See see Figure 2-5

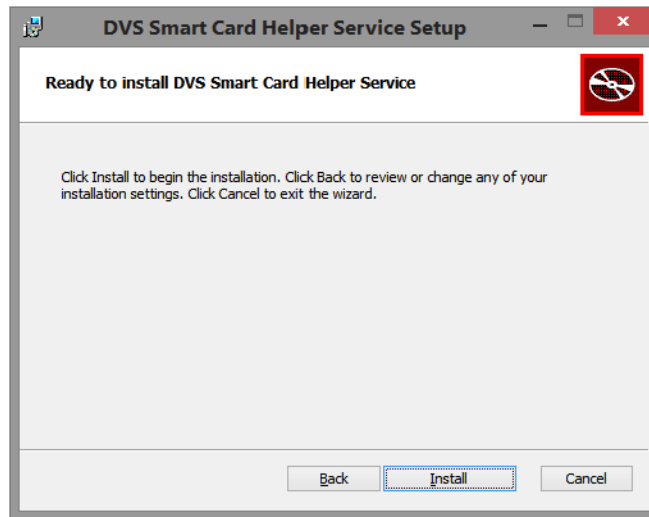


Figure 2-4: Ready to Install Screen



Figure 2-5: Installing screen

12. You will receive confirmation once the installation has completed. See see Figure 2-6.

13. Click **Finish** to exit the Smart Card Helper Service Installation Wizard.

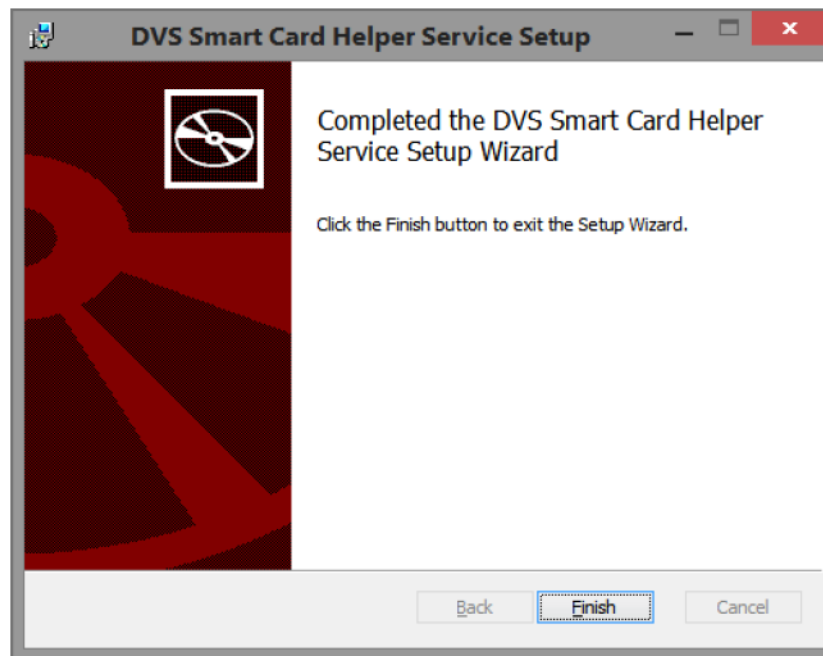


Figure 2-6: Installation Complete Screen

14. Please check if Smart Card Service is installed correctly by clicking **Windows** and **Q** on the keyboard.
15. In the Search field, enter `services.msc`.
16. List of Windows services screen appears. See see Figure 2-7.

Services (Local)					
DVS Smart Card Helper Service					
Stop the service Restart the service					
Description: The smart card helper service used by Dominion Voting Systems.					
Name	Description	Status	Startup Type	Log On As	
Cepstral License Server	Concurrency License Server for Cepstral Voices	Running	Automatic	Local System	
Certificate Propagation	Copies user certificates and root certificates from smart cards into the ...	Running	Automatic	Local System	
Claims to Windows Token Service	Service to convert claims based identities to windows identities	Running	Manual	Local System	
CNG Key Isolation	The CNG key isolation service is hosted in the LSA process. The service...	Running	Manual (Trigger...	Local System	
COM+ Event System	Supports System Event Notification Service (SENS), which provides aut...	Running	Automatic	Local Service	
COM+ System Application	Manages the configuration and tracking of Component Object Model...	Running	Manual	Local System	
Computer Browser	Maintains an updated list of computers on the network and supplies t...	Running	Manual (Trigger...	Local System	
Credential Manager	Provides secure storage and retrieval of credentials to users, applicatio...	Running	Manual	Local System	
Cryptographic Services	Provides three management services: Catalog Database Service, which...	Running	Automatic	Network Service	
DCOM Server Process Launcher	The DCOMLAUNCH service launches COM and DCOM servers in resp...	Running	Automatic	Local System	
Device Association Service	Enables pairing between the system and wired or wireless devices.	Running	Manual (Trigger...	Local System	
Device Install Service	Enables a computer to recognize and adapt to hardware changes with ...	Running	Manual (Trigger...	Local System	
Device Setup Manager	Enables the detection, download and installation of device-related sof...	Running	Manual (Trigger...	Local System	
DHCP Client	Registers and updates IP addresses and DNS records for this computer...	Running	Automatic	Local Service	
Diagnostic Policy Service	The Diagnostic Policy Service enables problem detection, troubleshoo...	Running	Automatic	Local Service	
Diagnostic Service Host	The Diagnostic Service Host is used by the Diagnostic Policy Service to...	Running	Manual	Local Service	
Diagnostic System Host	The Diagnostic System Host is used by the Diagnostic Policy Service t...	Running	Manual	Local System	
Distributed Link Tracking Client	Maintains links between NTFS files within a computer or across comp...	Running	Automatic	Local System	
Distributed Transaction Coordinator	Coordinates transactions that span multiple resource managers, such ...	Running	Automatic (Dela...	Network Service	
DNS Client	The DNS Client service (dnscache) caches Domain Name System (DNS...	Running	Automatic (Trig...	Network Service	
DVS Smart Card Helper Service	The smart card helper service used by Dominion Voting Systems.	Running	Automatic	Local System	

Figure 2-7: Smart Card Helper Service Screen

2.2 ImageCast Voter Activation Application Installation

1. In order to install the EMS ImageCast Voter Activation, insert the EMS Installation Disc, click the **Install** tab, expand the **EMS Client**

- Applications** item, and select **EMS Image Cast Voter Activation**.
2. Double click the **64bit version**.
 3. The User Account Control (UAC) screen appears. Click on the **Yes** button to proceed.
 4. Once you have selected the 64 bit version, the Image Cast Voter Activation Application Setup Wizard welcome screen appears
 5. Click **Next** to begin your installation. See see Figure 2-8.

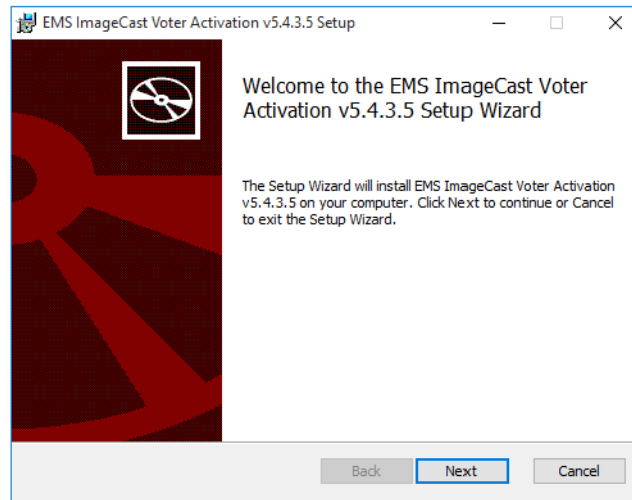


Figure 2-8: Setup Wizard screen

6. The License Agreement screen appears.
7. If you understand and agree to all the terms contained within the license agreement, click **Next**. See see Figure 2-9.

NOTE: You cannot proceed with the installation if you do not agree to the terms and conditions outlined in the License Agreement.

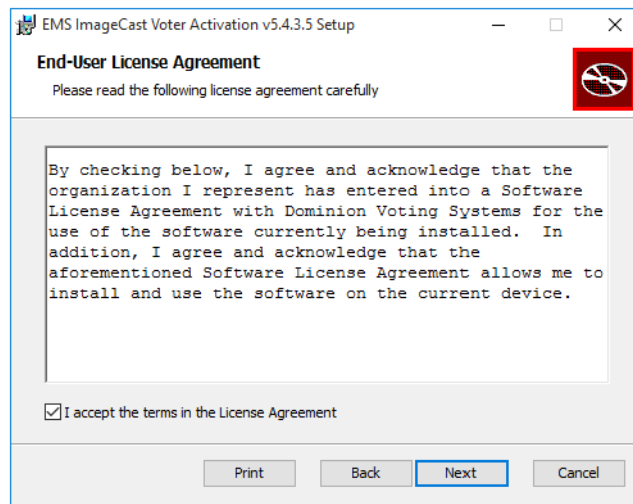


Figure 2-9: License Agreement screen

8. The Destination Folder screen appears. Keep the default file path listed in the Folder field. This is the location where the ImageCast Voter Activation Application will be installed.
9. Click **Next** to continue. See see Figure 2-10.

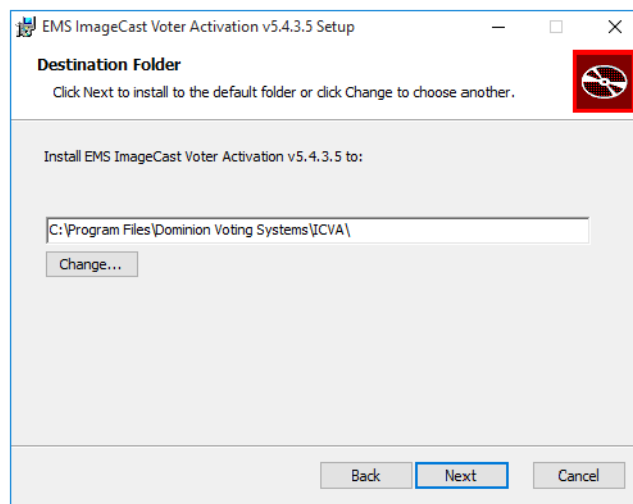


Figure 2-10: Destination Folder screen

10. The Ready to Install screen appears. See see Figure 2-11. Click **Install** to

confirm and begin your installation.

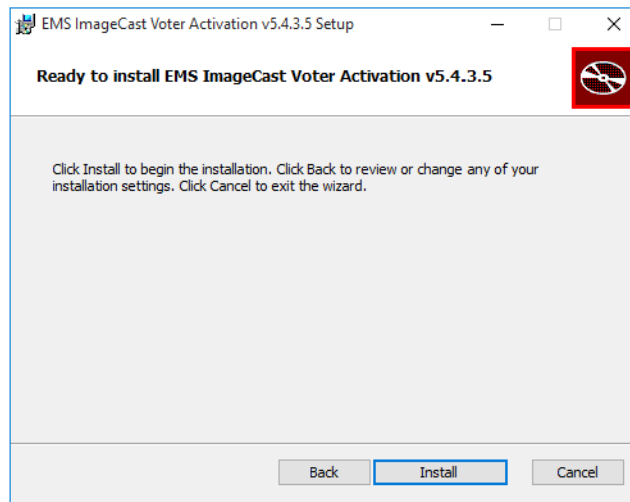


Figure 2-11: Ready to Install screen

11. ICVA will begin to install, see Figure 2-12.

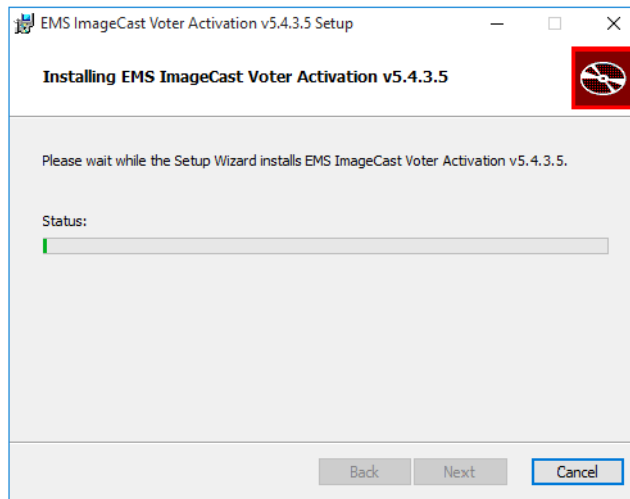


Figure 2-12: Installing screen

12. You will receive confirmation that the installation has completed. See see Figure 2-13. Click **Finish** to exit the Image Cast Voter Activation

Application Installation Wizard.

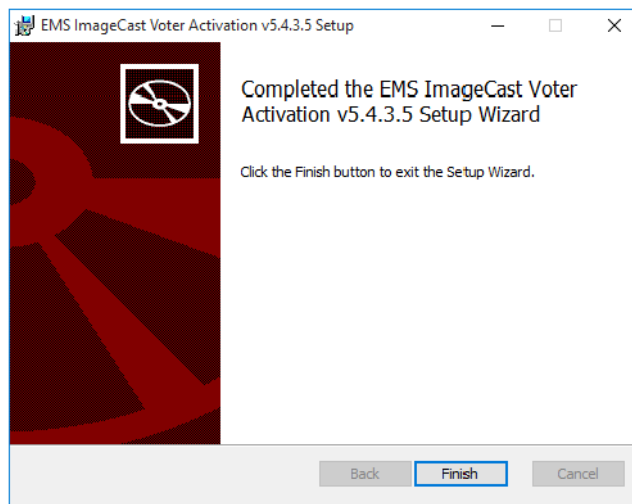


Figure 2-13: Installation Complete screen

CHAPTER 3: ICVA CONFIGURATION

This chapter describes how to correctly configure the ICVA application for use at the polling location.

3.1 Running the Application for the First Time

When the ICVA application is successfully installed, the next step is to run the application and perform some basic configuration steps.

1. To start the application, double-click the **ICVA** shortcut located on the desktop.
2. When the application starts, the user will be prompted to insert the poll worker smart card, in order to authenticate the user. See Figure 3-1.



Figure 3-1: Insert Poll Worker Smart Card screen

3. When the card is inserted, the application will prompt the poll worker for the

pin, in order to perform authentication. See Figure 3-2.

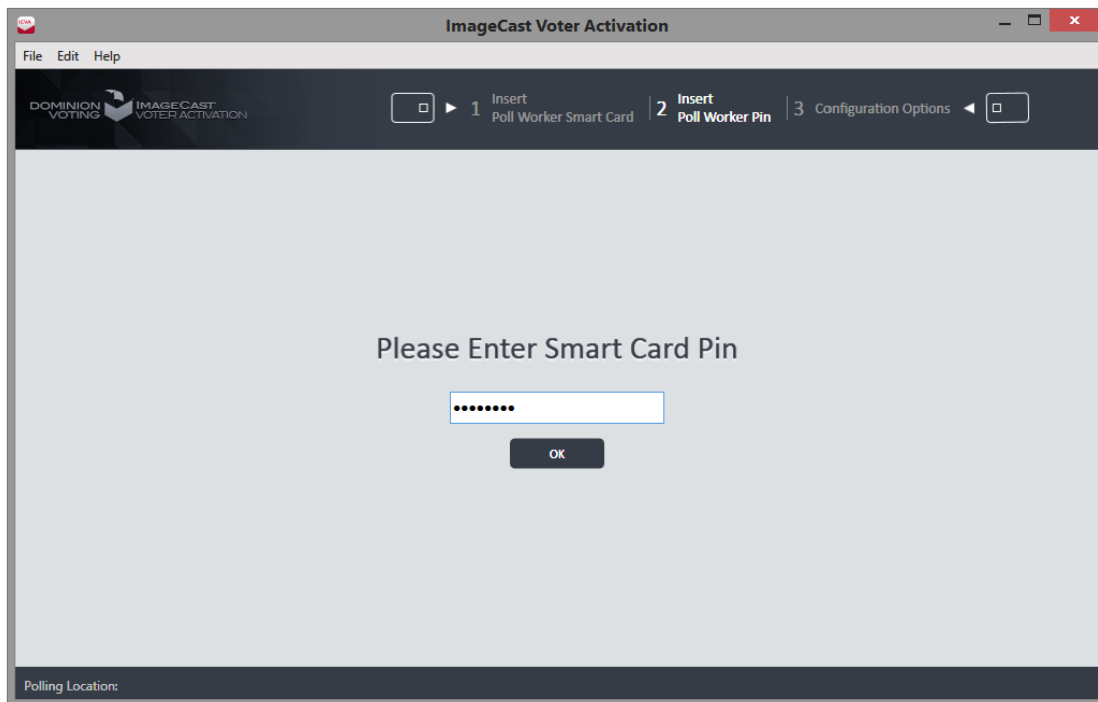


Figure 3-2: Enter Poll Worker Pin screen

4. When the poll worker is successfully authenticated, the application prompts the user to identify the activation code configuration file which the application should refer to. See Figure 3-3. This file is exported from the election definition project from the EMS Election Event Designer (EED) application.

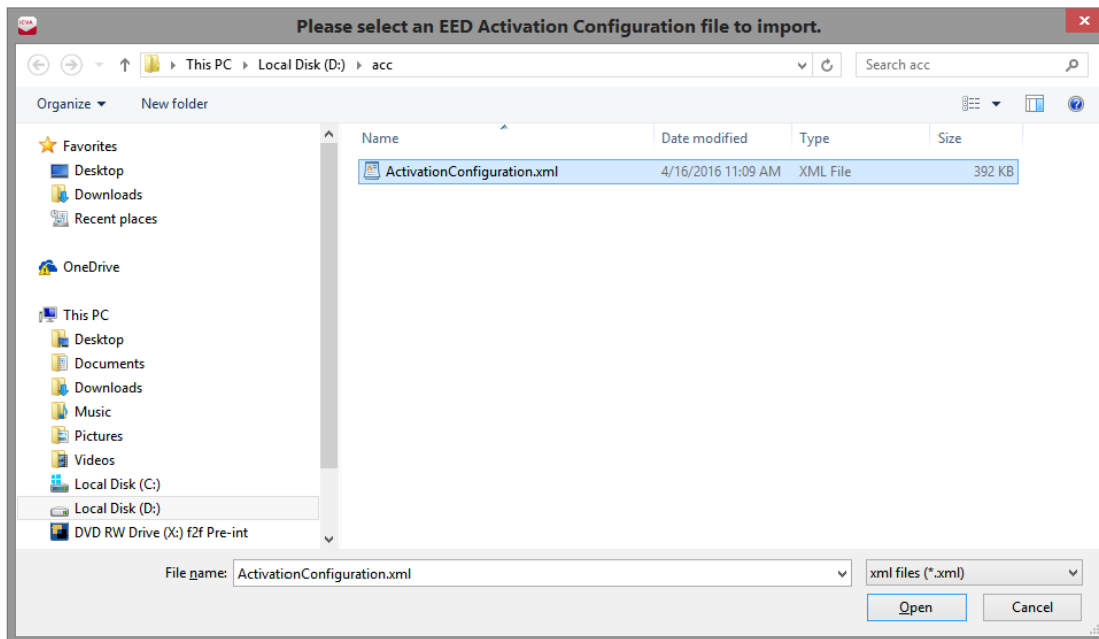


Figure 3-3: Browse to Activation Code Configuration File screen

5. If you have already created this file in EED and imported in ICVA, skip to step 8. Otherwise, open the election project in EED on your EMS workstation, and perform the next two steps.
6. In the Election Project menu, select the **Export** menu item and click the

Activation Configuration item. See Figure 3-4.

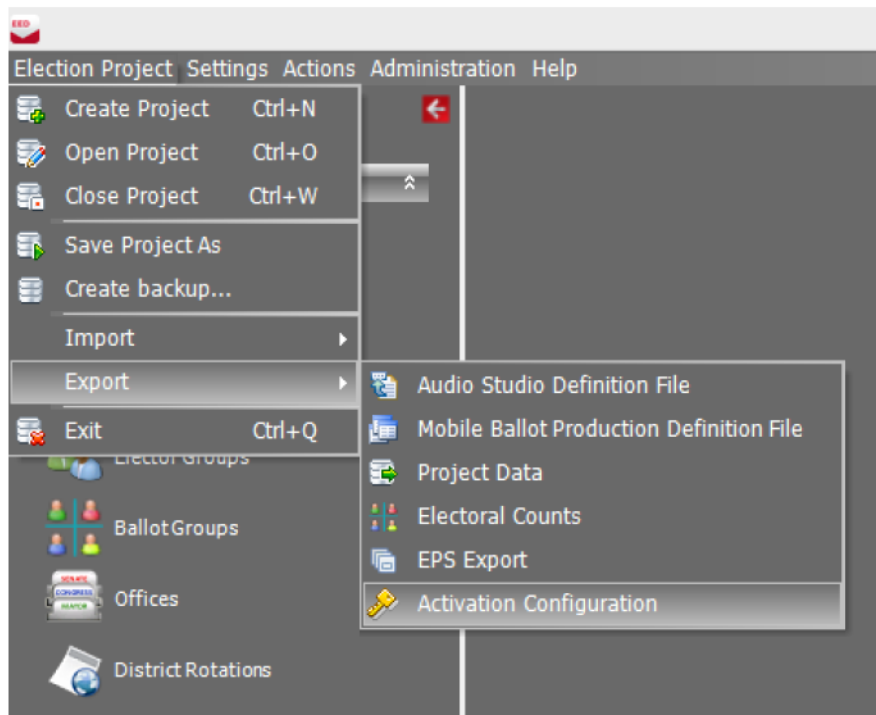


Figure 3-4: Exporting the Activation Code Configuration File screen

7. In the Save As dialog, navigate to the location where the file should be saved, and click **Save**. This file must be transported to the polling location computer where ICVA is running. See Figure 3-5.

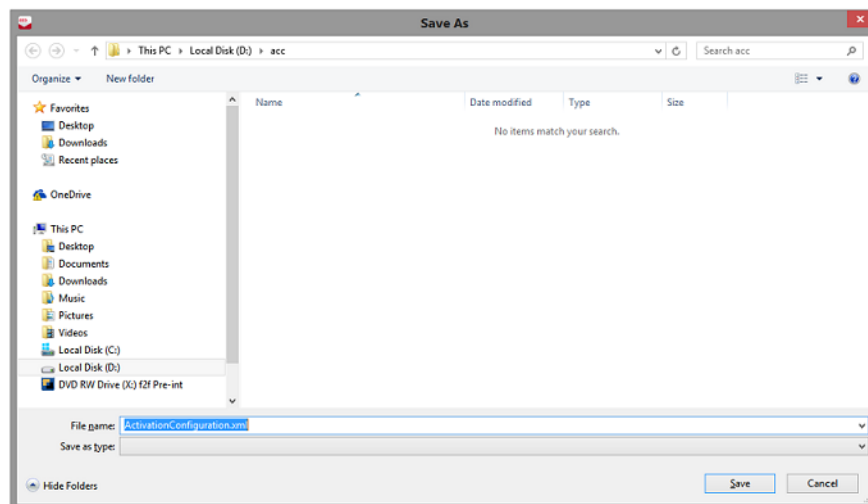


Figure 3-5: Saving the Activation Code Configuration File dialog

8. The user must indicate the polling location they are at in the configuration

screen.

9. When all the settings have been applied, click **Save**. See Figure 3-6.

NOTE: If there is only one polling location it will be selected automatically and Configuration Options screen will not be displayed.

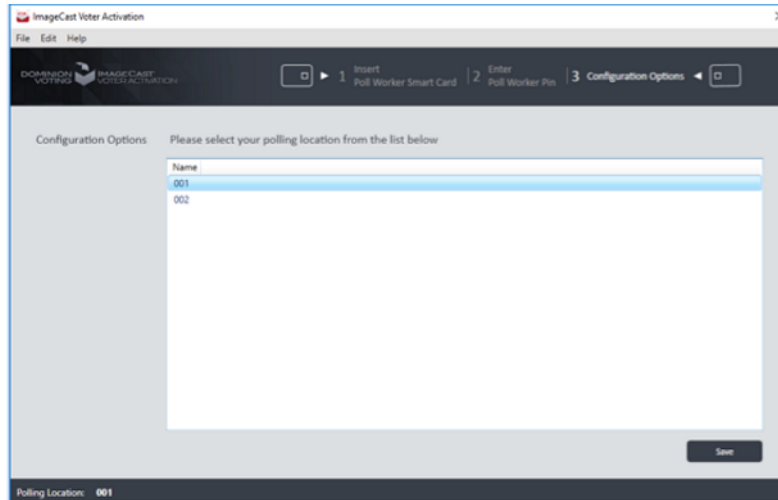


Figure 3-6: Configuring ICVA screen

Now that the configuration steps have been completed, the application will be ready to accept voter smart cards for programming or reading.

3.2 Voting Modes

It is possible to choose different voting modes for ICVA.

The following modes are available:

- None (default).
- Provisional.
- Challenged.

1. To access these settings in EED go to Settings > Project parameters (Be sure

to be in Ballots generated status). See Figure 3-7.

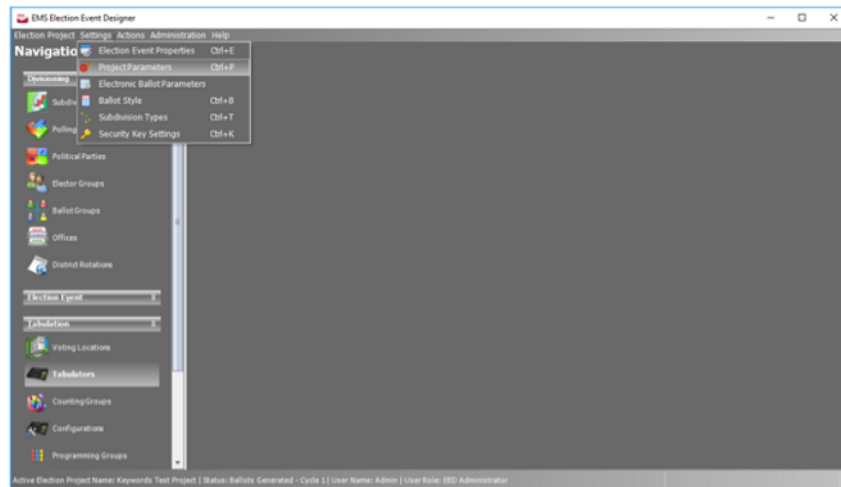


Figure 3-7: Location of Project Parameters in EED

2. In the Project Parameters screen on the General tab there is a drop-down menu for selection of the Voting Mode, called **Conditional Voting Mode**. See Figure 3-8.

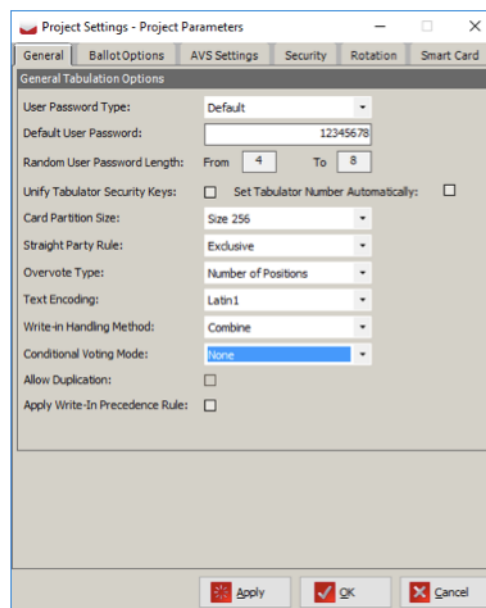


Figure 3-8: Conditional Voting Mode in Project Parameters screen

3. Export of Activation Configuration is required after changing previously set mode.

CHAPTER 4: ACTIVATING AND READING VOTER CARDS

When the ICVA application has been started, and configured properly, it will be waiting for the first Voter smart card to be inserted for programming.

The following steps describe the typical card activation and reading cycle.

1. A prompt will be displayed to the poll worker, asking for a voter smart card to be inserted. See Figure 4-1.

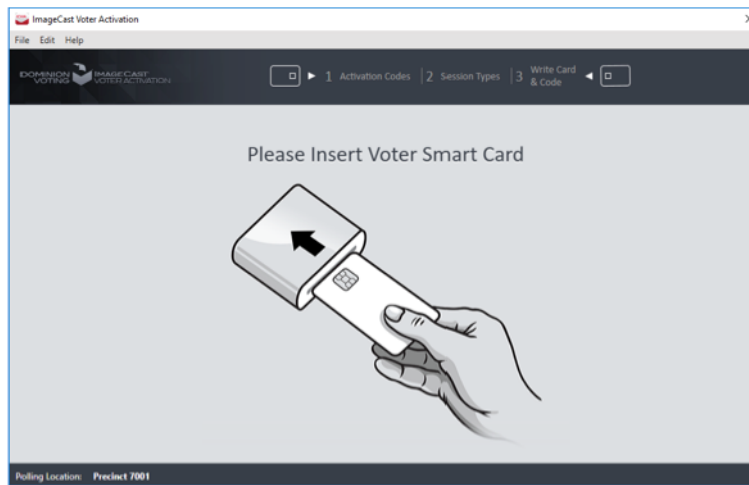


Figure 4-1: Insert Voter Smart Card screen

2. The poll worker will be presented with a list of applicable activation codes and their descriptions for the polling location where ICVA is running. Select the correct activation code for the voter, and click **Activate Voter Card**.
3. If the card is not empty the current content of card will be presented in the bottom right corner of the screen. See Figure 4-2.

The following content is provided:

- Status
- Activation Code
- Creation Time

The possible card statuses are:

- Not Voted
- Logged in
- Language Selection
- Party Selection
- AVS Device Selection

- Ballot
- Review
- Voted

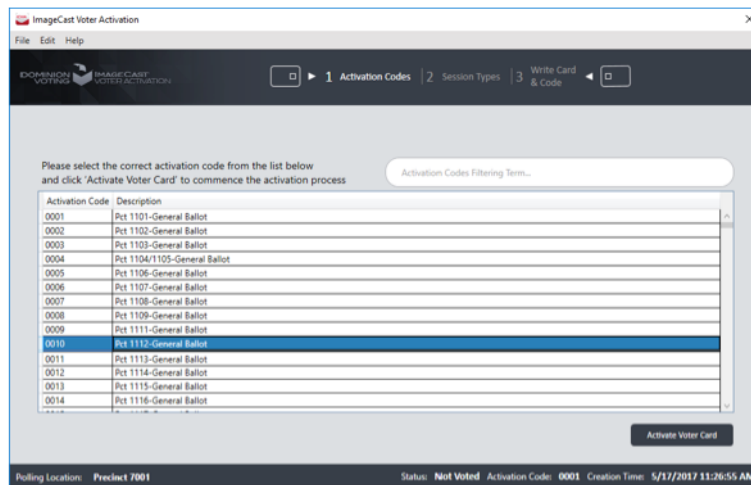


Figure 4-2: Selecting a Voter Session Activation Code screen

To review all voter session data click on **Review** button. (see section Reviewing and Canceling Voter Session)

- If ICVA has been configured to support activation of Accessible Voting Sessions (AVS) at the polling location where it is running, the poll worker will be prompted to choose the type of session to activate: Standard or Accessible. Click the button representing the correct session type for the voter to move to the next step. See Figure 4-3.

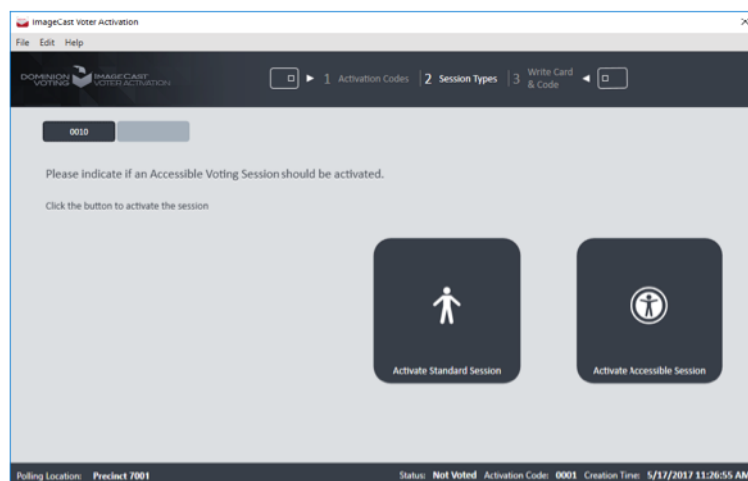


Figure 4-3: Indicating if Voter Session is Accessible screen

If ICVA has been configured to support provisional or challenged voting at the polling location where it is running (see section *Voting Modes*), the poll worker will be prompted to choose the type of session to activate: Regular, or, depending

on the type of conditional voting in the project configuration, Provisional or Challenged. Click the button representing the correct session type for the voter to move to the next step.

5. When the Poll Worker finishes choosing the session types, the application will start writing the data to the card. See Figure 4-4.

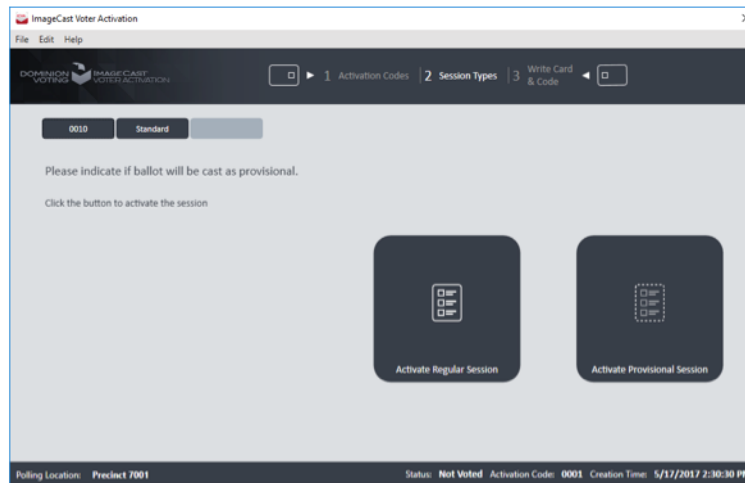


Figure 4-4: Indicating if Voter Session is Provisional or Regular screen

6. The application will indicate that the selections are currently being written to the voter card, and the user will be instructed not to remove the smart card. See Figure 4-5.

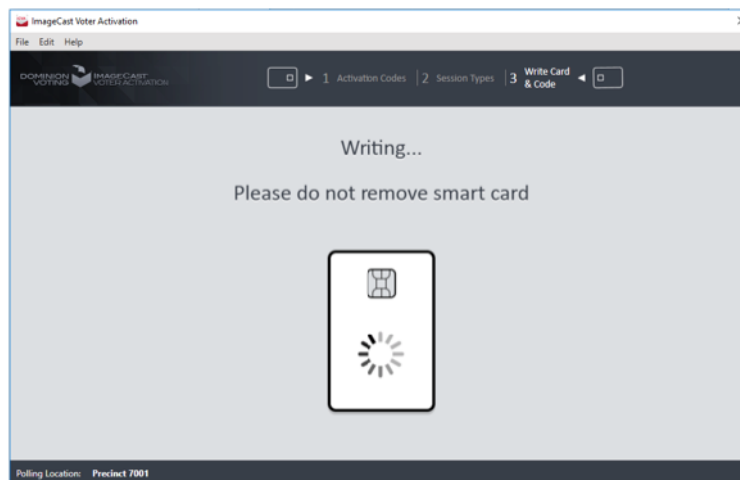


Figure 4-5: Programming Voter Card screen

7. If ICVA has been configured to support provisional or challenged voting at the polling location where it is running (See section *Voting Modes*), the poll worker will receive a unique code that needs to be written together with the voters name.
For provisional voting , Activate Provisional Session must be selected (step

5.) to receive this code. See Figure 4-6.

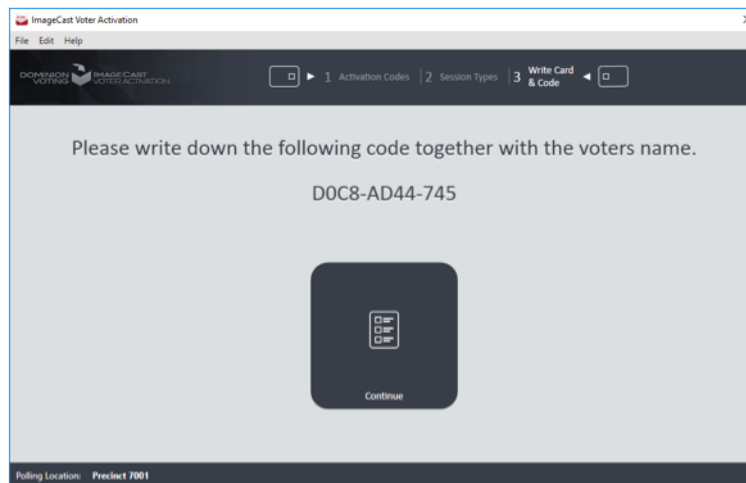


Figure 4-6: Code needs to be written together with voters name screen

8. The application will inform the user that the card has been successfully programmed. See Figure 4-7.

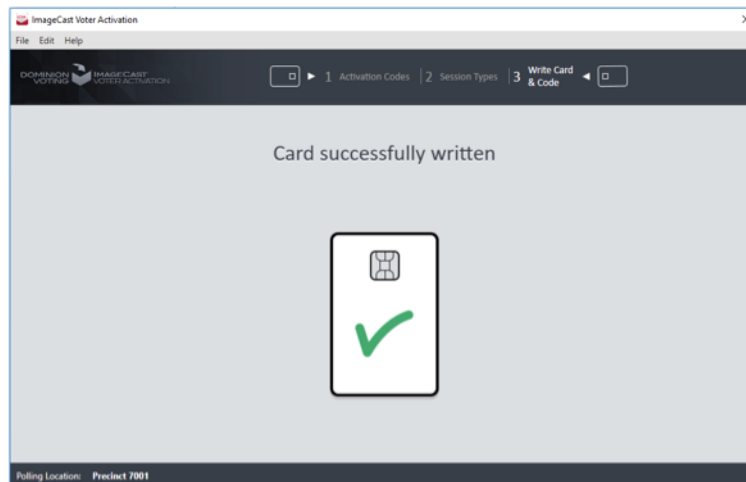


Figure 4-7: Card Successfully Written screen

9. The application will prompt the user to remove the smart card. Once it is removed, the poll worker will be presented with the situation in step 1 - the

application will be waiting for a voter card to be inserted. See Figure 4-8.

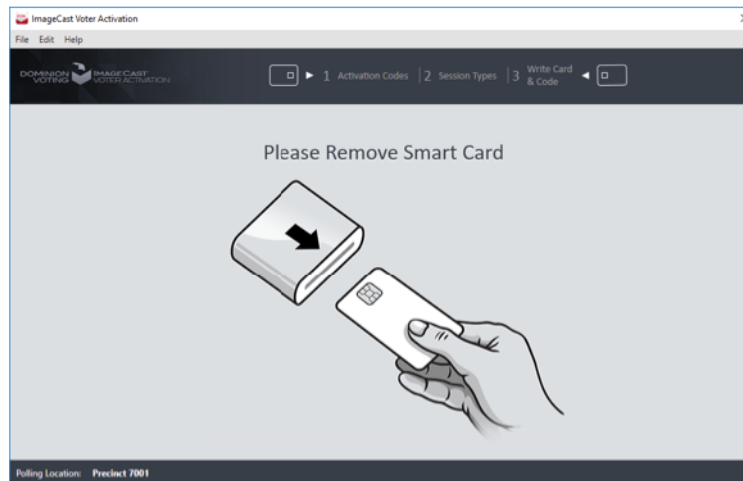


Figure 4-8: Remove Written Card screen

4.1 Reviewing and Canceling a Voter Session

If the inserted voter card contains data regarding the voter session, the poll worker can review the current voter session by clicking Review in the bottom right corner.

The voter session data , which exists on the card will be displayed.

After reviewing the current voter session, the poll worker can:

- Exit the voter card.
- Cancel current active voter session.

If a voter flees prior to voting or a card is inactivated by error, the poll worker can cancel the current active voter session. If the voter session is cancelled, the cancellation time and error code will display in the Session report and all the data on the card will be deleted.

- Clear voter card. All data which exist on the card will be deleted.
- Activate the voter card

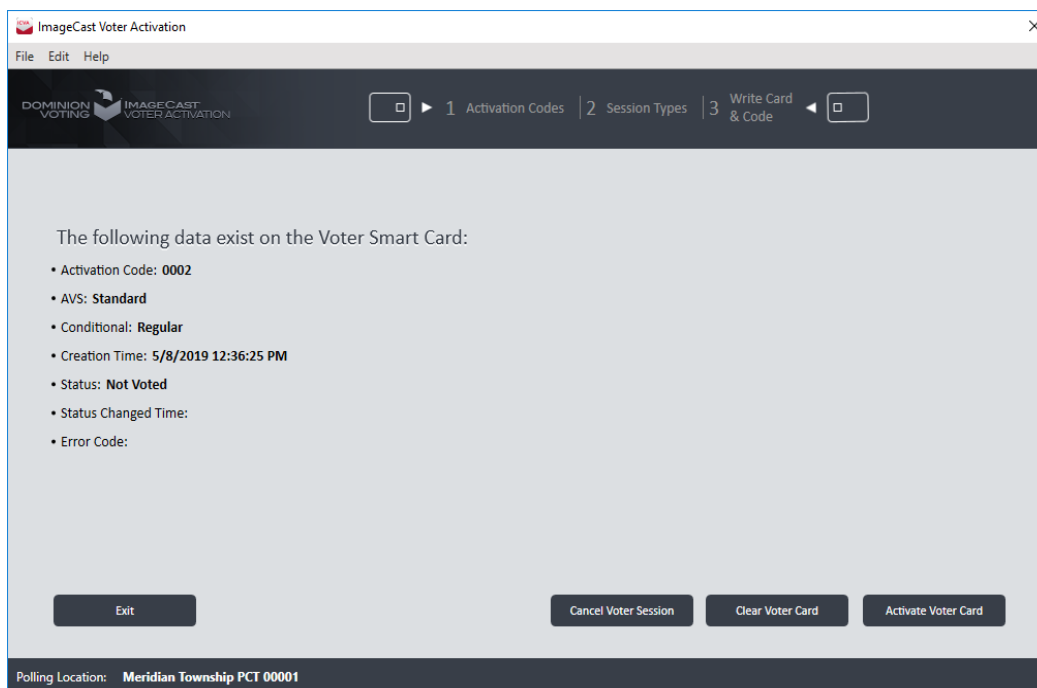


Figure 4-9: Reviewing and canceling current voter session

4.2 Error Codes

The following is a list of error codes written on the Voter's smart card with their description:

- 0 - Initial state (there is no error)
- 10 - Card data error
- 20 - Invalid Ballot
- 21 - Invalid session Id
- 22 - Invalid verification code
- 30 - Error loading the election data
- 31 - Retry connection dialog displayed
- 40 - Already voted
- 41 - The voter card with an already initialized voting session
- 50 - Failed to initialize TTS engine
- 60 - Business Rule Violation
- 70 - Cast Ballot Error
- 71 - No Ballot Header png
- 72 - Cast Ballot Error creating electronic ballot failed
- 73 - Cast Ballot Error sending data to printer failed
- 74 - Cast Ballot Error Printer not found
- 75 - Cast Ballot Error Printer Door Open
- 76 - Cast Ballot Error Printer Paper Jam
- 77 - Cast Ballot Error Printer Paper Jam
- 78 - Cast Ballot Error Printer Service Cycle Power
- 79 - Cast Ballot Error Printer Unspecified Error
- 80 - Cast Ballot Error Printer Load Paper
- 81 - Cast Ballot Error Printer Hardware Error
- 82 - Cast Ballot Error Printer Black Cartridge missing
- 83 - Print Ballot document could not be created

84 – Cast Ballot Error Vote was not counted but the application has already changed the voter card status to “CAST” and an end voting time and tabulator number have been inserted.

CHAPTER 5: VIEW SESSION REPORT

The Session Report contains information about activated voter cards.

To open the **View Session Report**, perform the following steps:

1. Expand the **File** menu and click on the **View Session Report** menu item. See Figure 5-1.
2. Session Report screen will appear.

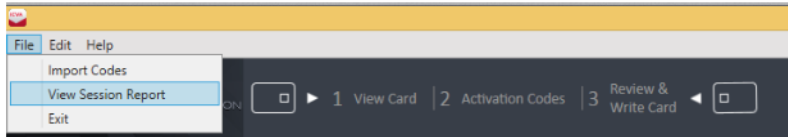


Figure 5-1: View Session Report menu screen

3. The total number of activated voter cards and number of activated cards in the current session are displayed at the top of the report. Furthermore, report shows number of activated cards which are canceled.

For each burned smart card included in the Session Report, a Report Grid (table) is produced containing the following fields, see Figure 5-2:

- **Activation Code:** The value of the activation code stored on the smart card.
- **Session Start Time:** The time when the session started.
- **Write Time:** The time when the session ended.
- **AVS support** (Optional).
- **Conditional/Challenged smart card settings** (Optional)
- **Canceled:** If voter session is canceled, the time when voter card session is canceled.
- **Error Code:** If the voter session is canceled, or there is an error during the voter session, an error code will display

Counter for Activated Cards					
Number of activated smart cards					
	Activated	Cancelled			
Total:	140043	24			
Current Session:	1	0			
Activation Code	Accessible Voting Support	Session Start Time	Write Time	Cancelled	Error Code
0018	Standard	1/18/2019 5:59:45 PM	1/18/2019 6:00:18 PM		
0018	Standard	1/18/2019 5:59:45 PM	1/18/2019 6:00:18 PM		
0018	Standard	1/18/2019 5:59:45 PM	1/18/2019 6:00:18 PM		
0018	Standard	1/18/2019 5:59:45 PM	1/18/2019 6:00:18 PM		
0018	Standard	1/18/2019 5:59:45 PM	1/18/2019 6:00:18 PM		
0018	Standard	1/18/2019 5:59:45 PM	1/18/2019 6:00:18 PM		
0018	Standard	1/18/2019 5:59:45 PM	1/18/2019 6:00:18 PM		
0018	Standard	1/18/2019 5:59:45 PM	1/18/2019 6:00:18 PM		
0018	Standard	1/18/2019 5:59:45 PM	1/18/2019 6:00:18 PM		
0018	Standard	1/18/2019 5:59:45 PM	1/18/2019 6:00:18 PM		
0018	Standard	1/18/2019 5:59:45 PM	1/18/2019 6:00:18 PM		
0018	Standard	1/18/2019 6:01:24 PM	1/18/2019 6:02:10 PM	1/18/2019 6:02:49 PM	
0018	Accessible	1/18/2019 6:01:24 PM	1/18/2019 6:04:52 PM	1/18/2019 6:07:39 PM	
0008	Standard	1/18/2019 6:01:24 PM	1/21/2019 9:39:07 AM	1/21/2019 9:40:15 AM	

Figure 5-2: Counter of Activated Cards screen

4. A user can reset (delete) all the content by pressing the Reset button. The can also close the report by pressing the Close button.

REVISION HISTORY

Rev.	Date	Author	Summary
6	05-28-2019	tijana.todorovic	Resolving discrepancies for 511-CO
5	05-24-2019	sava.antonijevic	Updated list in section “Error codes”.
4	04-18-2019	tijana.todorovic	Resolving discrepancies for 511-CO
3	04-16-2019	tijana.todorovic	Resolving discrepancies for 511-CO
2	04-03-2019	sava.antonijevic	Updated list in section “Error codes”.
1	03-06-2019	tijana.todorovic	Branched for 5.11.

LIST OF FIGURES

Figure 2-1: Setup Wizard Welcome screen	2
Figure 2-2: License Agreement Screen	3
Figure 2-3: Destination Folder Screen	3
Figure 2-4: Ready to Install Screen	4
Figure 2-5: Installing screen	4
Figure 2-6: Installation Complete Screen	5
Figure 2-7: Smart Card Helper Service Screen	5
Figure 2-8: Setup Wizard screen	6
Figure 2-9: License Agreement screen	7
Figure 2-10: Destination Folder screen	7
Figure 2-11: Ready to Install screen	8
Figure 2-12: Installing screen	8
Figure 2-13: Installation Complete screen	9
Figure 3-1: Insert Poll Worker Smart Card screen	10
Figure 3-2: Enter Poll Worker Pin screen	11
Figure 3-3: Browse to Activation Code Configuration File screen	12
Figure 3-4: Exporting the Activation Code Configuration File screen	13
Figure 3-5: Saving the Activation Code Configuration File dialog	13
Figure 3-6: Configuring ICVA screen	14
Figure 3-7: Location of Project Parameters in EED	15
Figure 3-8: Conditional Voting Mode in Project Parameters screen	15
Figure 4-1: Insert Voter Smart Card screen	16
Figure 4-2: Selecting a Voter Session Activation Code screen	17
Figure 4-3: Indicating if Voter Session is Accessible screen	17
Figure 4-4: Indicating if Voter Session is Provisional or Regular screen	18
Figure 4-5: Programming Voter Card screen	18
Figure 4-6: Code needs to be written together with voters name screen	19
Figure 4-7: Card Successfully Written screen	19
Figure 4-8: Remove Written Card screen	20
Figure 4-9: Reviewing and canceling current voter session	21
Figure 5-1: View Session Report menu screen	24

Figure 5-2: Counter of Activated Cards screen	25
---	----

End of Document

